

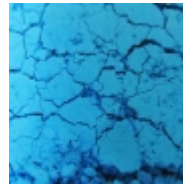


$\text{DœÑ} \langle \text{D} \rangle \text{D}^{3/4} \text{Ñ} \in \text{Ñ} f \text{Ñ} \ddagger \text{D}^{1/2} \text{D}^{3/4} \text{D}^1 \text{Ñ} \in \text{D}^\circ \text{D} \pm \text{D}^{3/4} \text{Ñ}, \text{Ñ} \langle \text{D}^2$
 $\text{D} \cdot \text{D} \text{D} \text{D}^{1/2} \text{D} \mu \text{D}^{1/4}$
 $\text{D} \cdot \text{D}^{3/4} \text{D}^2 \text{D}^3 \text{D}^{3/4} \text{Ñ} \in \text{D}^{3/4} \text{D} \text{D} \mu, \text{D}^\circ \text{Ñ} f \text{D} \langle \text{D}, \text{Ñ}, \text{Ñ} \in$
 $\text{Ñ}, \text{D}^{3/4} \text{D}^2 \text{D}^\circ \text{Ñ} \in \text{N} \langle$
 $\text{D} \text{D} \rangle \text{N} \cdot \text{D}^{1/4} \text{N} \langle \text{D} \rangle \text{D}^{3/4} \text{D}^2 \text{D}^\circ \text{Ñ} \in \text{D} \mu \text{D}^{1/2} \text{D}, \text{Ñ} \cdot$

$\text{DœÑ} \langle \text{D} \rangle \text{D}^{3/4} \text{D}^2 \text{D}^\circ \text{Ñ} \in \text{D}^{1/2} \text{D}^{1/2} \cdot \text{Ñ} \in \text{Ñ},$

$\text{D} \ddot{\text{Y}} \text{D}, \text{D}^3 \text{D}^{1/4} \text{D} \mu \text{D}^{1/2} \text{Ñ}, \text{D}^{1/2} \text{D} \mu \text{D}^{3/4} \text{D}^{1/2} \text{D}^{3/4} \text{D}^2 \text{Ñ} \langle \text{D}^1$
 $\text{D} \langle \text{D}, \text{D}^{1/2} \text{D}, \text{D}^1 \text{Ñ} \cdot \text{Ñ} f \text{Ñ} \dots \text{D}^{3/4} \text{D}^1 \text{5} \text{D}^3 \text{Ñ} \in \text{D}^\circ \text{D}^{1/4} \text{D}^{1/4}$

160D ÑfD±



DŸD, D³D¹⁄⁴DμD¹⁄²Ñ, D¹⁄²DμD³⁄⁴D¹⁄²D³⁄⁴D²Ñ⟨D¹

D⟨DμÑ, : D⟨D, D¹⁄²D, D¹

DŸÑ∈D%D, D-D²D%D`D,Ñ,DμD»ÑCE: DšD,Ñ,D°D¹

DœD°Ñ•Ñ•D°:Á 5 D³Ñ∈D°D¹D¹⁄⁴

D•DμD%D¹⁄²D%D²Ñ⟨D¹ D⟨D, D³D¹⁄⁴DμD¹⁄²Ñ, D`D»Ñ• D%D°Ñ∈D°Ñ`D, D²D°D¹⁄²D,Ñ•

D•DμD%D¹⁄²D%D²Ñ⟨Dμ D⟨D, D³D¹⁄⁴DμD¹⁄²Ñ,Ñ⟨ D`D°ÑŽÑ, Ñ•Ñ∈D°D, D¹, D¹⁄²D°Ñ•Ñ•Ñ%DμD¹⁄²D¹⁄²Ñ•D¹,Ñ•D²DμÑ,Ñ•Ñ%D, D¹Ñ•Ñ• D, ÑfÑ•Ñ, D%D¹Ñ‡D, D²Ñ⟨D¹

Ñ‡D²DμÑ, D² D¹Ñ⟨D»Dμ. D₁Ñ, D°D±D, D»DμD¹⁄², D¹Dμ D¹⁄⁴D, D³Ñ∈D,Ñ∈ÑfDμÑ,, Ñ•D%DÑ...Ñ∈D°D¹⁄²Ñ•DμÑ, Ñ•Ñ∈D°D%D¹⁄²Ñ•Ñ,ÑCE D, D⟨DμÑ∈D²D%D¹⁄²D°Ñ‡D»D»ÑCE D¹⁄²Ñ⟨D¹ Ñ‡D²DμÑ,,Ñ•D%D-D`D°DμÑ, Ñ∈D,Ñ•ÑfD¹⁄²D%D° Ñ• Ñ‡DμÑ,D°D%D¹ D³Ñ∈D°D¹⁄²D,Ñ‡DμD¹. D•DμD%D¹⁄²D%D²Ñ⟨D¹

D⟨D, D³D¹⁄⁴DμD¹⁄²Ñ, D%DÑ‡DμD¹⁄²ÑCE D°D%D¹⁄²Ñ‡DμD¹⁄²Ñ,Ñ∈D,Ñ∈D%D²D°D¹⁄²D¹⁄²Ñ⟨D¹ D, Ñ•D°D%D¹⁄²D%D¹⁄²D,Ñ‡D¹⁄²Ñ⟨D¹ D²

D,Ñ•D⟨D%D»ÑCE D-D²D°D°D¹⁄²D, D,Á

D" DμD»D°DμÑ, D⟨Ñ∈D%D•Ñ∈D°Ñ‡D¹⁄²ÑfÑŽ D%D¹⁄²D%D²Ñf D⟨D%D»ÑfD⟨Ñ∈D%D•Ñ∈D°Ñ‡D¹⁄²D%D¹.

D«D»Ñf%D¹⁄²Ñ∈DμÑ•Ñ‡DμD¹⁄²Ñ, D¹⁄²Ñ⟨Dμ D⟨D, D³D¹⁄⁴DμD¹⁄²Ñ,Ñ⟨ D⟨Ñ∈DμD%D±Ñ∈D°D-D%D²Ñ⟨D²D°ÑŽÑ, Ñ,D°D°Dμ D⟨D%D³D»D%D¹⁄²Ñ•DμD¹⁄²D¹⁄²Ñ⟨D¹

ÑfD»ÑCEÑ,Ñ∈D°Ñ, D, D³D»D»DμÑ, D%D²Ñ⟨D¹ Ñ•D²DμÑ, D, D%D¹,Ñ∈D°DμD°ÑŽÑ, DμD³D%D² D² D²D, D`D, D¹⁄⁴D%D¹⁄⁴ D`D, D°D⟨D°D-D%D¹⁄²Dμ, D-D° Ñ•Ñ‡DμÑ,

Ñ•Ñ, D%D³D»D%D¹⁄²D, D°D°DμÑfÑ,Ñ•Ñ• D±D%D»DμDμ Ñ•Ñ∈D°D, D¹⁄⁴D, D. Ñ, D%D¹ D²Ñ∈DμD¹⁄²Ñ• D°D°D° Ñ•D°D¹⁄⁴Ñ⟨D¹ Ñ•Ñ∈D°D, D¹ D%D±Ñ•Ñ‡D¹⁄²Ñ⟨D¹

D⟨D, D³D¹⁄⁴DμD¹⁄²Ñ, Ñ•D⟨D%D¹⁄²D%D±DμD¹⁄² D%D¹,Ñ∈D°DμD¹⁄²Ñ,ÑCE D%D°D°Ñ•D, D¹⁄²ÑfD¹⁄⁴ 90% Ñ•D²DμÑ,D°, Ñ, D»Ñf%D¹⁄²Ñ∈DμÑ•Ñ‡DμD¹⁄²Ñ, D¹⁄²Ñ⟨D¹

D%D¹,Ñ∈D°DμD¹⁄², 200-300%.

Đ•Đ°Ń•Ń◁Ń%ĐμĐ½Đ½Ń◁Đμ Ń†Đ²ĐμŃ,Đ° Đ»ŃfŃ†Ń◁Đμ Đ²Ń•ĐμĐ³Đ% Đ¿Ń€Đ%Ń•Đ²Đ»Ń•ŃŽŃ,Ń•Ń• Đ² Đ¿Ń€Đ%Đ•Ń€Đ°Ń†Đ½Đ%Đ¹ Đ%Ń•Đ½Đ%Đ²Đμ, Đ² Đ±ĐμĐ»Đ%Đ¹ Đ%Ń•Đ½Đ%Đ²Đμ Đ%Ń•Ń,ĐμĐ½Đ°Đ, Đ±ŃfĐ◁ŃfŃ, Đ¿Đ°Ń•Ń,ĐμĐ»Ń€Đ½Ń◁Đ%Đ,ĐŸĐ%Đ»Ń€Đ•Đ%Đ²Đ°Ń,Ń€Ń•Ń• Đ,Đ½Đ, Ń•Đ»ĐμĐ◁ŃfĐμŃ, Đ¿Đ% Ń,Đ%Đ½Ńf Đ¶Đμ Đ¿Ń€Đ,Đ½Ń†Đ,Đ¿Ńf, Ń†Ń,Đ% Đ, Đ¿Đ,Ń%ĐμĐ²Ń◁Đ%Đ: Đ◁Đ%Đ±Đ°Đ²Đ»Ń•Ń,Ń€ Đ¿Đ%Đ°Đ°Đ¿ĐμĐ»Ń€Đ½Đ% Đ² Ń€Đ°Ń•Đ¿Đ»Đ°Đ²Đ»ĐμĐ½Đ½ŃfŃŽ Đ%Ń•Đ½Đ%Đ²Ńf Đ◁Đ% Đ¿Đ%Đ»ŃfŃ†ĐμĐ½Đ,Ń• Đ½ŃfĐ¶Đ½Đ%Đ³Đ% Ń†Đ²ĐμŃ,Đ%Đ²Đ%Đ³Đ% Đ%Ń•Ń,ĐμĐ½Đ°Đ°.

ĐŸĐ,Đ³Đ½ĐμĐ½Ń, Đ¶Đ,Ń€Đ%Ń€Đ°Ń•Ń,Đ²Đ%Ń€Đ,Đ½Ń◁Đ¹.Đ Đ°Ń•Ń,Đ²Đ%Ń€Đ,Đ½ Đ² Đ³Đ»Đ,Ń†ĐμŃ€Đ,Đ½Đμ,Ń•Đ¿Đ,Ń€Ń,Đμ,Đ%Đ°Ń•Đ»Đ°Ń...,Đ¿Ń€Đ%Đ¿Đ,Đ»ĐμĐ½Đ³Đ»Đ,Đ°Đ%Đ»Đμ.

[Đ◁Đ½Ń,Đ%Ń€Đ½Đ°Ń†Đ,Ń•Đ%Đ¿Đ¿Ń€Đ°Đ²Ń†Đμ](#)

ĐœĐ½ĐμĐ½Đ,Ń•Đ¿Đ%Đ°ŃfĐ¿Đ°Ń,ĐμĐ»ĐμĐ¹: Đ•Ń%Đμ Đ½ĐμŃ, Đ½Đ½ĐμĐ½Đ,Đ¹ Đ%Đ± Ń•Ń,Đ%Đ½ Ń,Đ%Đ²Đ°Ń€Đμ.
ĐŸĐ%Đ¶Đ°Đ»ŃfĐ¹Ń•Ń,Đ°, Đ²Đ%Đ¹Đ◁Đ,Ń,Đμ, Ń†Ń,Đ%Đ±Ń◁ Đ%Ń•Ń,Đ°Đ²Đ,Ń,Ń€ Ń•Đ²Đ%Đμ Đ½Đ½ĐμĐ½Đ,Đμ.